

# I'm All About that SPACE

*Empowering Youth to Build  
Community Resilience in  
Neighborhoods and Online*

*February 19, 2015*



## Technical Details

- Audience lines are muted and will remain muted throughout the presentation
- QUESTIONS → **Q&A BOX**
  - Q&A session during the last 15 minutes of today's webinar
  - Use Q&A Box to submit questions throughout the presentations
- Technical Issues?
  - Use Q&A box to submit a question or issue
  - [http://support.citrixonline.com/en\\_US/GoToWebinar](http://support.citrixonline.com/en_US/GoToWebinar)

## Webinar Follow-Up

- Webinar is being recorded and will be made available for viewing after today's presentation
- Please complete the webinar **evaluation!**



## Today's Presenters:

- **Noël Sincere Duckworth** and **Lauren Camphausen**, Training and Prevention Team, *Delaware Coalition Against Domestic Violence*
- **Michele Ostafy** and **Eric Robinson**, safe + respectful project, Child, Inc.
- **Melinda Dubinski**, REAL Relationships Project Coordinator, Turning Point at People's Place

safe + respectful .org



## Technical Support:

- **Lauren Camphausen**, DCADV
- **Matt Leibowitz**, DCADV

## POLL QUESTION!



## Connecting the Dots & Breaking the Silos

*Understanding the Links Among  
Multiple Forms of Violence*

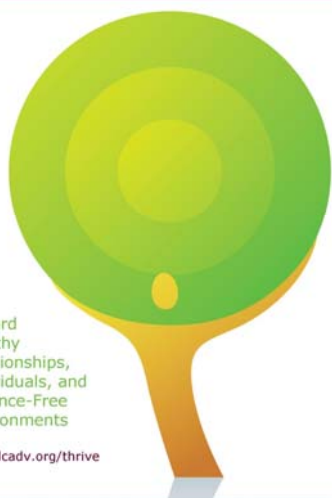
*Nov. 5, 2014*

Guest Presenters:

**Natalie Wilkins, PhD and Marci Hertz, MS**, *Centers for Disease Control and Prevention*

**Alyson Lang**, *Chair, Wilmington Health Planning Council*

## THRIVE Delaware



Toward  
Healthy  
Relationships,  
Individuals, and  
Violence-Free  
Environments

[www.dcadv.org/thrive](http://www.dcadv.org/thrive)

### Our Approach:

- Improve the health care response to Intimate Partner Violence (IPV)
- Coordinate efforts to address IPV as a public health and health equity issue
- Prevention and social change

February is

TEEN  
DATING  
VIOLENCE  
AWARENESS  
MONTH





**love is respect V.org**  
National Teen Dating Abuse Helpline  
1-866-331-9474 1-866-331-8453 TTY

**Healthy Relationships  
Model Units  
Grades 6-8, 9-12**



**Break the Cycle**  
Empowering Youth to End Domestic Violence



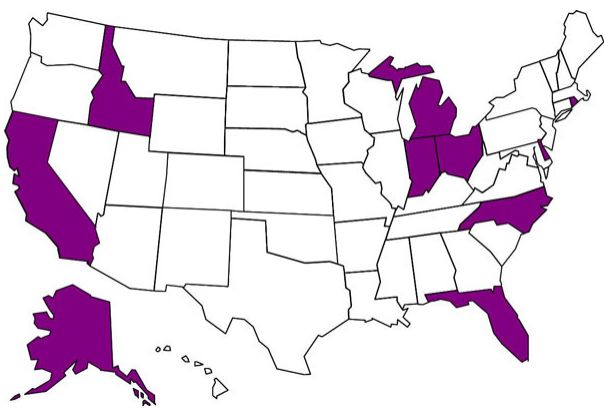
**PEACE,  
LOVE &  
BOWLING**  
A Teen Dating Violence Awareness and Prevention Month Event



## CDC DELTA FOCUS PROGRAM

(Domestic Violence Prevention Enhancements and Leadership Through Alliances, Focusing on Outcomes for Communities United with States)

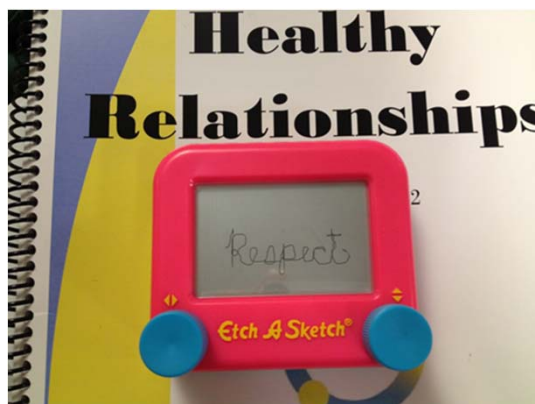
Provides funding through early 2018 to 10 state domestic violence coalition grantees to engage in primary prevention of intimate partner violence (IPV). Each grantee supports 1-2 local community efforts



<http://www.cdc.gov/violenceprevention/deltafocus/>

## Take a minute to....

- Name 3 qualities or characteristics of Healthy Relationships

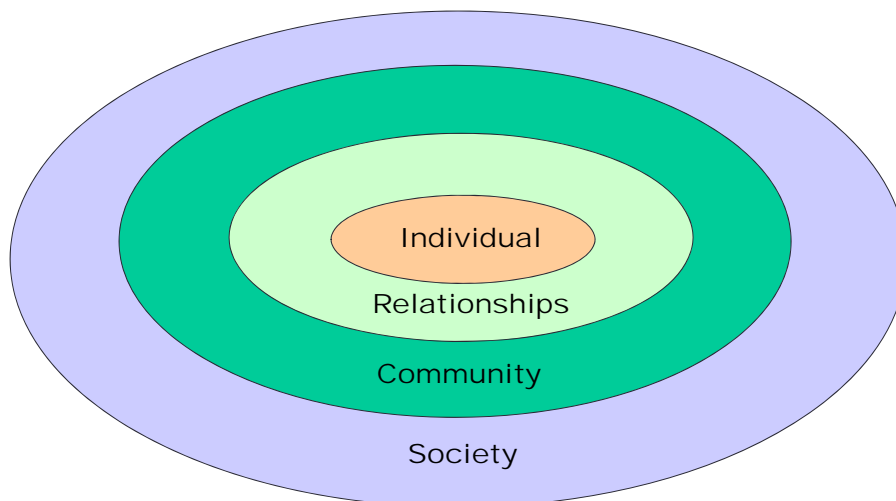


## Now take a minute to....

- Name 3 characteristics (i.e. conditions, practices, policies, culture, mission/vision, philosophy) of settings or communities where Healthy Relationships thrive



## Social Ecological Model



## What Determines Health?

- Our behaviors are influenced by a variety of factors which, in turn, are dependent on differences in relationships, settings, cultures, conditions, and how things are structured .
- These factors are called “determinants” as they determine, or influence, individual behaviors.

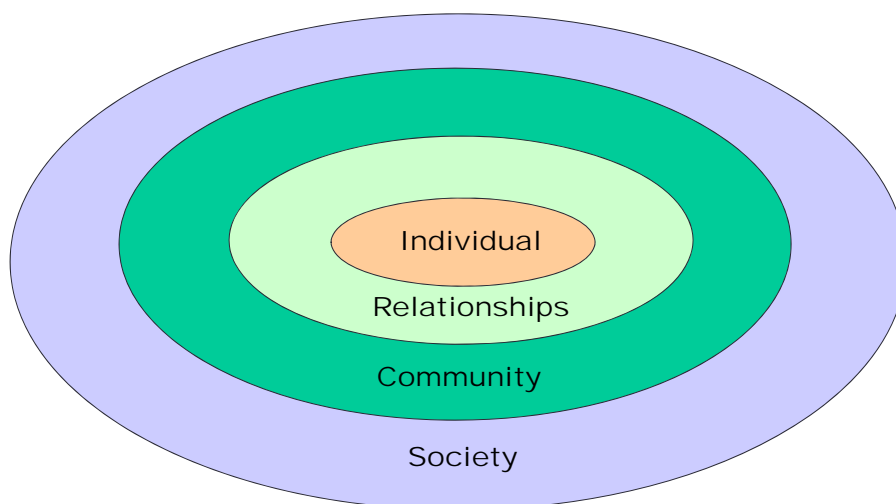


## Determinants of Health



- Social Determinants of Health
- Structural Determinants of Health
- Risk and Protective Factors
- Health Inequities
- Health Equity

## Social Ecological Model






## New Focus: Scaling Up

At the end of the five-year program, anticipated outcomes for DELTA FOCUS are:

- Changes in programs, processes, structures and other social determinants of health at state and local levels that have the potential to impact intimate partner violence
- Increases in protective factors and reductions in risk factors for intimate partner violence
- Establishment of a program evaluation database on violence prevention strategies that will contribute to the evidence base for IPV prevention at the societal and community levels



## Neighborhood/Community Protective Factors


	CM	TDV	IPV	SV	YV	Bullying	Suicide	Elder Abuse
Coordination of services among community agencies	X		X				X	X
Access to mental health and substance abuse services	X						X	
Community support and connectedness*	X		X	X	X		X	X

NOTE: CM (Child Maltreatment), TDV (Teen Dating Violence), IPV (Intimate Partner Violence), SV (Sexual Violence), YV (Youth Violence)

\*Community support and connectedness typically measured at the individual level

Source: Wilkins, N., Tsao, B., Hertz, M., Davis, R., Kleven, J. (2014). **Connecting the Dots: An Overview of the Links Among Multiple Forms of Violence**. Atlanta, GA: National Center for Injury Prevention and Control, Centers for Disease Control and Prevention. Oakland, CA: Prevention Institute.

### Societal Risk Factors

	CM	TDV	IPV	SV	YV	Bullying	Suicide	Elder Abuse
Norms supporting aggression*	X	X	X	X	X			X
Media Violence				X	X	X	X	
Societal income inequality	X		X		X	X		
Weak health, educational, economic, and social policies/laws	X		X	X			X	
Harmful gender norms*	X	X	X	X	X	X		

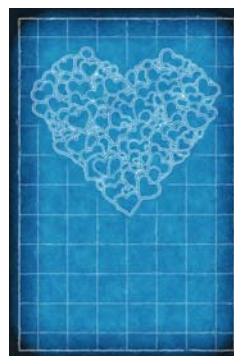
NOTE: CM (Child Maltreatment), TDV (Teen Dating Violence), IPV (Intimate Partner Violence), SV (Sexual Violence), YV (Youth Violence)

\*Norms are generally measured at the individual level

Source: Wilkins, N., Tsao, B., Hertz, M., Davis, R., Klevens, J. (2014). **Connecting the Dots: An Overview of the Links Among Multiple Forms of Violence**. Atlanta, GA: National Center for Injury Prevention and Control, Centers for Disease Control and Prevention Oakland, CA: Prevention Institute.

## Health & Equity by Design

Health begins where we live,  
learn, work, pray, play.....  
and connect on-line.





safe + respectful's mission is to promote healthy relationships with the ultimate goal of violence-free relationships and communities.

safe + respectful works to engage all members of the community, especially youth, to deliver a more holistic approach to violence prevention

## Where is safe + respectful?



## Our Community Action Team (CAT)

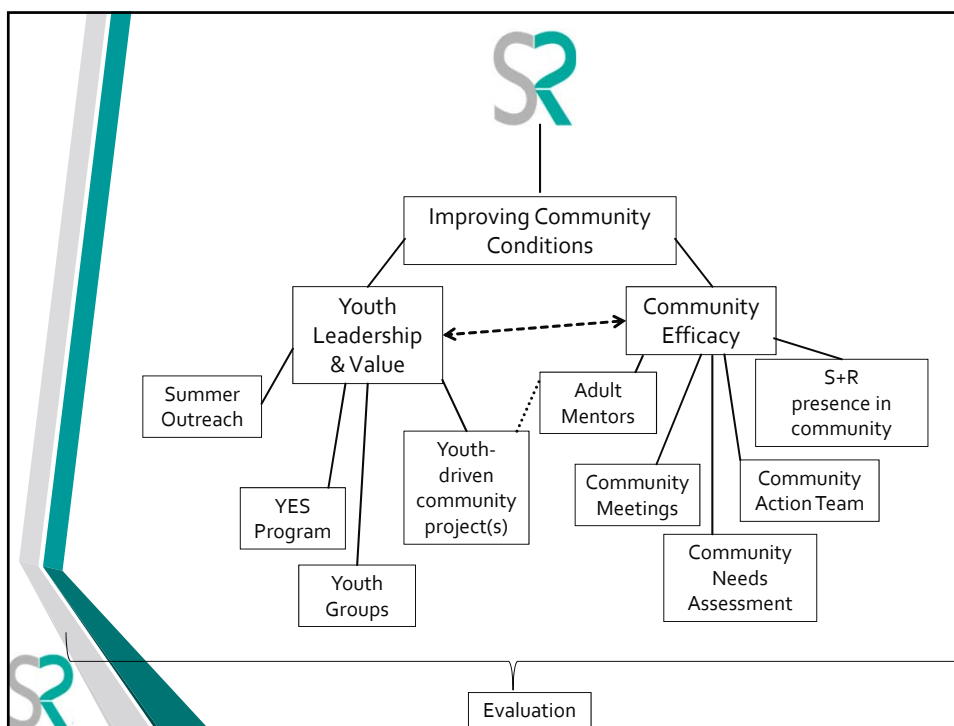


Big Brothers Big Sisters  
of Delaware

Delaware  
Domestic  
Violence Task  
Force (DVTF)

**BRYAN TOWNSEND**  
SENATOR \* 11TH DISTRICT





## What is YES?

### ❖ Curriculum

- 2 versions: African American population focus; Multicultural population focus
- 6 Units: Youth as Leaders, Learning About Our Community, Improving our Community, Building Intergenerational Partnerships, Planning for Change, Action and Reflection

### ❖ Youth-led Projects- YES projects involve youth in the process of changing community physical and social environments and includes three components:

- Youth empowerment activities;
- Neighborhood organization development;
- Community development projects that involve youth and organizations working together.

<http://yes.sph.umich.edu/>

## One Size Fits All?

- Honoring the need to be community-based vs community-placed
- Embracing Youth Empowerment
  - Listening/learning
  - Being flexible- can't always "stick to the program"
  - Authentically giving power to their voices







## SM / Website Links

- [www.safeandrespectful.org](http://www.safeandrespectful.org)
- [www.facebook.com/safeandrespectful](https://www.facebook.com/safeandrespectful)
- [www.twitter.com/Safe\\_Respectful](https://www.twitter.com/Safe_Respectful)
- [www.instagram.com/safe\\_respectful](https://www.instagram.com/safe_respectful)

## Social Media & Youth Empowerment

*Melinda Dubinski, REAL Relationships Project Coordinator  
Turning Point at Peoples Place*



**POLL QUESTION**

